

| 頁 | 図, 式 | 誤 | 正 |
|-----|-------------|--|---|
| 67 | 図2.4中 | r (太字・イタリックに) | r |
| 81 | 図2.15 (a) | 差替え | 欄 外 |
| 114 | 式 (4.12) 単位 | $[C/m^2]$ | (C/m^3) |
| 120 | 図4.7 | 差替え | 欄 外 |
| 120 | 図4.8 | | 誘電体 I の側に σ を追加 |
| 158 | 図6.2 | 差替え | 欄 外 |
| 164 | 図6.4 | 差替え | 欄 外 |
| 225 | 式 (9), (10) | (9) 分子の V 二つを V に, 分母の z を z に (10) 分子の r を r に | $\nabla V = a_r \frac{\partial V}{\partial r} + a_\phi \frac{1}{r} \frac{\partial V}{\partial \phi} + a_z \frac{\partial V}{\partial z}$ $\nabla \cdot A = \frac{1}{r} \frac{\partial (rA_r)}{\partial r} + \frac{1}{r} \frac{\partial A_\phi}{\partial \phi} + \frac{\partial A_z}{\partial z}$ |

⑩, ⑪

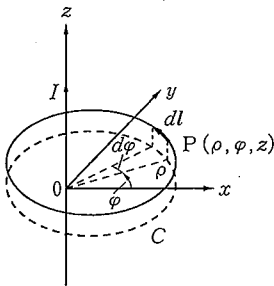


図2.15

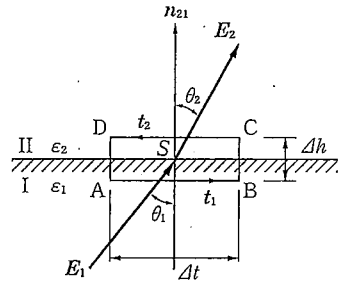


図4.7

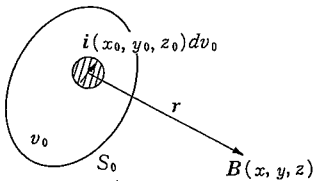


図6.2

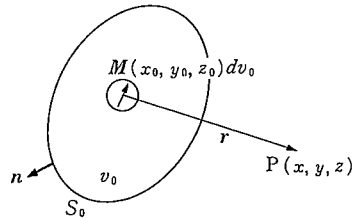


図6.4